

For
SIGN
GRAPHICS

LIPI®

Mimaki™

Roll to Roll Eco-solvent Inkjet Printer

JV100-160

Expert printing made easy.



LIPI MARKETING PVT. LTD.

No: 28, 3rd Cross St, Venkateswara Colony,
Nehru Nagar, OMR Kottivakkam, Chennai, Tamil Nadu 600041

☎ +91 94443 95467 / +91 94443 95477 ✉ sales@lipimarketing.com 🌐 www.lipimarketing.com

JV100-160 Expert printing made easy.

The JV100-160 is a new inkjet printer designed based on Mimaki's "high image quality" and "reliability" technology, an expert in inkjet printers for sign graphics, with an emphasis on ease of use and high operability.

All the superior technologies mounted to the JV100-160, such as a new function of DAS that automatically makes adjustments when changing media, the new RasterLink7 RIP software that makes work faster and significantly reduces processing time, and the newly developed AS5 ink with high drying performance will back up your business.

The four UP-graded features for power-up your business

UP!

NEW! Function for the high image quality **UP!**

DAS

Auto-adjustment of dot position and media feed amount correction by printer

NEW! Speed **UP!**

Faster print of high-quality images

27.4 m²/h

Print mode:
by 4C 720×600 dpi
(Tarpaulin)

NEW! Drying property **UP!**

New type Eco-sol ink
Mimaki original
AS5

NEW! Reproducibility Ease of use **UP!**

Mimaki original
RIP



NEW! DAS (Dot Adjustment System)

Reduces the load of media adjustment for each media exchange and leads to beautiful prints

The function to adjust automatically the dot position and the feed amount that affect print quality as the standard equipment.

After changing a media and a printing condition, the ink dot position and media feeding amount must be adjusted accordingly. Since DAS automatically applies them, printing can be performed without labor and variation of adjustment by the operator (*1).

*1 : Some media cannot be automatically applied.

DAS

It is the function to print a dedicated pattern to the media and read by the sensor mounted on the carriage to adjust automatically:

- Dot position (Dot jetting position at the bi-direction)
- Feeding amount (Media feeding amount)



Improper dot position



Overlap/Black streaks
(Insufficient feeding amount)



Gap/White streaks
(Excessive feeding amount)



Proper dot position and feeding amount

MAPS4

NCU/NRS

Long-standing reliable technology to achieve high image quality by Mimaki of Sign graphics expert

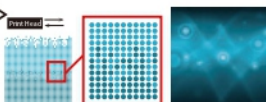
"MAPS4" supported (Mimaki Advanced Pass System) Banding reduction function

By printing the border of the path in a gradation tone, banding (horizontal stripes), uneven color, and glossy stripes are reduced to achieve smooth printing.

<MAPS OFF>
(Image)



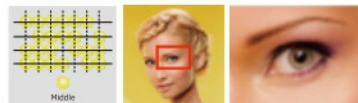
<MAPS ON>
(Image)



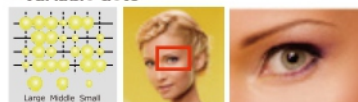
Minimum ink size 4pl Beautiful print of less granularity feeling

Three different ink dot sizes are used in printing to enable high-quality print with reduced granular feeling.

<Normal dots>



<Variable dots>



Based on printing conditions such as media/ink type and resolution, the most suitable gradation pattern is automatically selected and printed.

Dots are combined with the minimum size of 4pl to enable smooth color printing with less granular feeling.

NCU/NRS employed to monitor missing nozzles

The sensor automatically detects the condition of nozzles. When the NCU (Nozzle Check Unit) detects a missing nozzle, it automatically performs cleaning. If there is a nozzle problem left unsolved by the cleaning, NRS (Nozzle Recovery System) automatically replaces the defective nozzles with other nozzles, and enables users to continue their operation without waiting for service personnel.





Print Speed

Possible to increase print jobs of short delivery times with reliable high-speed printing

Print Speed High-speed mode: 720x600 dpi

Glossy PVC 20.0 m²/h **Tarpaulin 27.4 m²/h**

Prints out **180% faster** than JV150*



*Comparison at 6 pass 4-Color printing at the similar resolution range as JV150

PVC

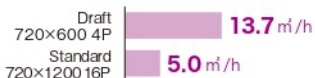
4C

C M Y K



8C

C M Y K
LC LM LK Or



Tarpaulin

4C

C M Y K



8C

C M Y K
LC LM LK Or



Ink

Beautiful × Speedy × Eco-friendly
Eco-solvent ink of well balanced in every respect

NEW! Mimaki's newly developed Eco-sol ink AS5

The AS5 is Mimaki's newly developed ink with high quality and safety which features high drying properties.

Since the ink evaporates quickly after printing, it prevents blocking during winding and reproduces the details perfectly without impairing the detailed depiction in images with a large amount of ink.



Mimaki's reliable & long-seller, SS21 ink can be installed.

Either 4C or 8C of AS5 or SS21 ink can be installed and the 8C ink set consists of CMYKLCm plus Light black and Orange, which enables extremely beautiful and vivid color expression and sharp, high-definition printing.

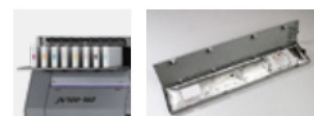
By using Light black, it is possible to faithfully reproduce monochrome data without color transfer on a gray scale, human skin without graininess, and gradation expression without tone jump.

Color comparison



"Eco-Cartridge", an eco-friendly reusable ink cartridge is prepared for AS5 and SS21 ink.

The "Eco Cartridge" is a reusable plastic case to be able to replace an internal ink pack. It aims to lighten the burden on the environment by reducing plastic waste.



The SS21 gained the certification of "GREEN GUARD Gold", based on most strict global standard of chemical substance diffusion. It assures the product property conforms to schools and medical facilities. This ink minimizes the emission of chemical substances in the indoor space and reduces the burden on the global environment.



Raster Link 7



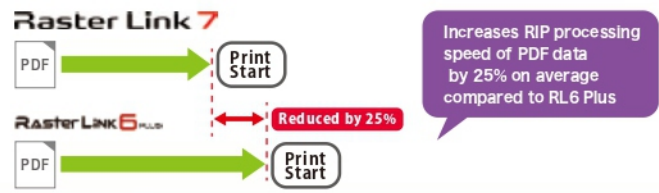
NEW! Supports operability and the fineness of print-outs

- Improves reproducibility of special effects (such as transparency) of PDF data
- Increases RIP processing speed of PDF data by 25% on average
- Prints out the variable data by Variable print function
- Displays frequently used setting and pop-up windows

1 PDF data with a lot of special effects embedded



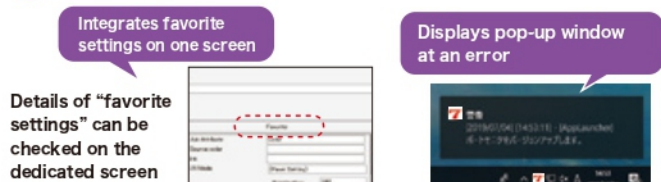
2 Increases RIP processing speed of PDF data by 25% on average



3 Variable print function



4 Easy-to-check displays



Print speed

PVC 4C				PVC 8C				Tarpaulin 4C				Tarpaulin 8C			
Print mode		Print speed(m/h)		Print mode		Print speed(m/h)		Print mode		Print speed(m/h)		Print mode		Print speed(m/h)	
Draft	720×600 4P	Bi Hi	27.4	Draft	720×600 4P	Bi Hi	13.7	Super Draft	300×600 2P	Bi Std	62.9	Super Draft	360×600 2P	Bi Std	31.5
High Speed	720×600 6P	Bi Hi	20.0	High Speed	720×600 6P	Bi Hi	10.0	Draft	300×900 3P	Bi Std	39.5	Draft	300×900 3P	Bi Std	19.7
Standard ①	720×900 8P	Bi Hi	15.5	Standard ①	720×900 8P	Bi Hi	8.4	High Speed	720×600 4P	Bi Hi	27.4	High Speed	720×600 4P	Bi Hi	13.7
Standard ②	720×1200 12P	Bi Hi	11.3	Standard ②	720×1200 16P	Bi Hi	5.0	Standard ①	720×600 6P	Bi Hi	20.0	Standard ①	720×600 6P	Bi Hi	10.0
High Quality	1200×1200 12P	Bi Hi	8.8	High Quality	1200×1200 16P	Bi Hi	3.3	Standard ②	720×900 8P	Bi Hi	15.5	Standard ②	720×900 8P	Bi Hi	8.4
								High Quality	720×1200 12P	Bi Hi	11.3	High Quality	720×1200 12P	Bi Hi	5.6

Specifications

Item	JV100-160
Print head	On-demand piezo head (2 staggered layout)
Printing resolution	360 dpi, 600 dpi, 720 dpi, 900 dpi, 1200 dpi
Ink	Type/Color
	Capacity
Maximum drawing	1,610 mm (63 in)
Media	Maximum width
	Thickness
	Roll diameter
	Roll weight
Interface	USB2.0 / Ethernet 1000BASE-T
Power	Single-phase (AC100-120V±10% / AC200-240V±10%) x2, (50/60Hz±1 Hz) x2
Power consumption	AC100V:1.44 kw x2 or less/AC200V:1.92 kw x2 or less
Operational environment	Temperature: 20-30 degC (68-86 degF) Humidity: 35-65%Rh (without condensation)
Dimensions (WxDxH)	2,775 x 700 x 1,392 mm (109 x 28 x 55 in)
Main unit weight	166 kg (366 lb)

Ethernet supported!
Create a free and efficient working environment

Ex. Print data editing on an office PC to send the data to print directly to a printer at the work site

Supplies

Item	Color	Item code	Remarks	
Eco-solvent ink SS21 GREENGUARD Gold certified ink	Cyan	SS21-C-60	600ml Ink pack	
	Magenta	SS21-M-60		
	Yellow	SS21-Y-60		
	Black	SS21-K-60		
	Light Cyan	SS21-LC-60		
	Light Magenta	SS21-LM-60		
	Orange	SS21-OR-60		
	Light Black	SS21-LK-60		
	Cyan	SPC-0588C		2L Ink pack
	Magenta	SPC-0588M		
	Yellow	SPC-0588Y		
	Black	SPC-0588K		
	Light Cyan	SPC-0588LC		
	Light Magenta	SPC-0588LM		
Orange	SPC-0588Or			
Light Black	SPC-0588Lk			
Eco-solvent ink AS5	Cyan	AS5-C-60	600ml Ink pack	
	Magenta	AS5-M-60		
	Yellow	AS5-Y-60		
	Black	AS5-K-60		
	Light Cyan	AS5-LC-60		
	Light Magenta	AS5-LM-60		
	Orange	AS5-OR-60		
	Light Black	AS5-LK-60		
	Cyan	AS5-C-2L		2L Ink pack
	Magenta	AS5-M-2L		
	Yellow	AS5-Y-2L		
	Black	AS5-K-2L		
	Light Cyan	AS5-LC-2L		
	Light Magenta	AS5-LM-2L		
Orange	AS5-OR-2L			
Light Black	AS5-LK-2L			
MS Cleaning cartridge	SPC-0294	220ml Ink cartridge		
MBIS(Mimaki Bulk Ink System) III	OPT-J0364	Ecocase, Mid cartridge, Tube (8pcs/each)		

GREEN GUARD Gold: Applicable products to this "GREEN GUARD Gold certification" are acceptable for use in environments such as schools and medical facilities based on the most strict global standard of chemical substance diffusion. The MBIS III is required for using 2L ink pack.



LPI MARKETING PVT. LTD.

No: 28, 3rd Cross St, Venkateswara Colony,
Nehru Nagar, OMR Kottivakkam, Chennai, Tamil Nadu 600041

+91 94443 95467 / +91 94443 95477 sales@lipimarketing.com www.lipimarketing.com