

For
TEXTILES &
APPAREL

LIPI[®]

LIPI MARKETING PVT. LTD.

Mimaki[™]

Water-based sublimation transfer inkjet printer

TS55-1800



**The evolution
of production printing**



LIPI MARKETING PVT. LTD

No: 28, 3rd Cross St, Venkateswara Colony, Nehru Nagar, OMR Kottivakkam, Chennai - 600041

☎ +9194443 95477 / +91 94443 95467

✉ sales@lipimarketing.com 🌐 www.lipimarketing.com

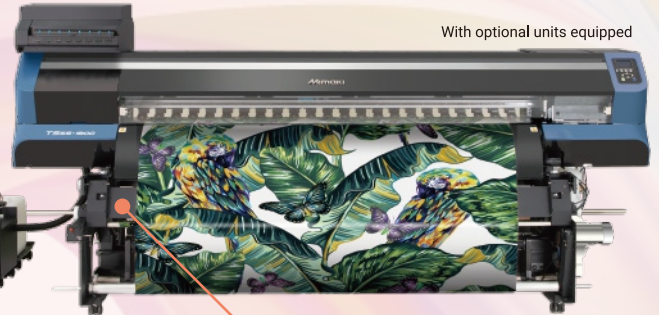
TS55-1800

The "TS55-1800" is a revolutionary sublimation transfer inkjet printer for apparel/textile achieving high-speed printout of up to 135 sqm/h (1,453 sq.ft/h), superior functionality and convenient options suited for stable, long-term printout sessions at reduced cost.



Standard model

Options 10kg ink supply unit



With optional units equipped

Options Extended heater

Options Mini-jumbo roll unit

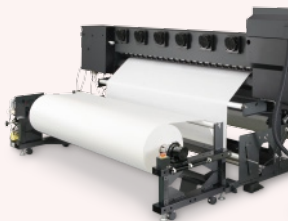


Rear view with optional units equipped

Options aiming for cost reduction

Mini-jumbo roll unit corresponding to high-speed, high-volume demands

This is a feeding unit to load the "Mimaki Vision Jet-X" transfer paper with a length of about 2,500 m (8,202 ft). It reduces the cost per square meter and shortens the downtime due to media replacement, when compared with the case using the previous 150 m (492 ft) -long transfer paper.

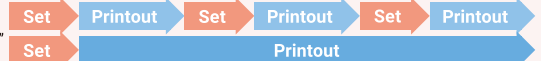


■ The mini-jumbo roll, "Mimaki Vision Jet-X" featuring approximately 2,500m (8,202 ft/h) of transfer paper is announced concurrently with model "TS55-1800".

Previously using a transfer paper roll of 150m (492 ft) length to print at the maximum print speed (135 sqm/h; 1,453 sq.ft/h) of "TS55-1800", it was incapable to have a continuous printing like all-night operation without operators due to necessity of their paper replacing work. However the combination of the mini-jumbo roll, "Mimaki Vision Jet-X" and "TS55-1800" allows for extended printout sessions unattended. The mini jumbo roll also contributes to reducing the running cost of printer systems with lower per-square meter unit price in comparison to smaller rolls.

When using smaller 150 m rolls

When using "Mimaki Vision Jet-X" mini-jumbo rolls



Extended heater supporting stable operation

The extended heater attached to the lower portion of the standard heater facilitates the drying of high-speed printing results.



10kg ink supply unit corresponding to extended successive printing jobs

Equipment of the large quantity of 10kg (22 lb) ink tank enables long-term successive operations such as over-night printout sessions. The tank achieves significant reductions in running cost and operation time over the standard 2 liter pack cartridges.



Providing for high productivity

Maximum printout speed mode 135 sqm/h (1,453 sq.ft/h) / Standard quality mode 50 sqm/h (538 sq.ft/h)

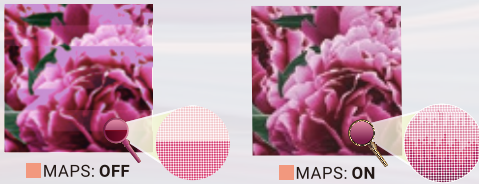
Adoption of the newly developed print heads ensures high-quality print even at a high speeds, achieving 130% productivity over our conventional model (TS300P-1800) with standard quality mode printing at 50 sqm/h (538 sq.ft/h). By newly enabling the use of "MAPS" function in high-speed mode (65sqm/h; 699 sq.ft/h) printing, TS55-1800 achieves excellent image quality even with high speed printing.

Technologies for uninterrupted reliable printing operations

MAPS functionality reduces banding

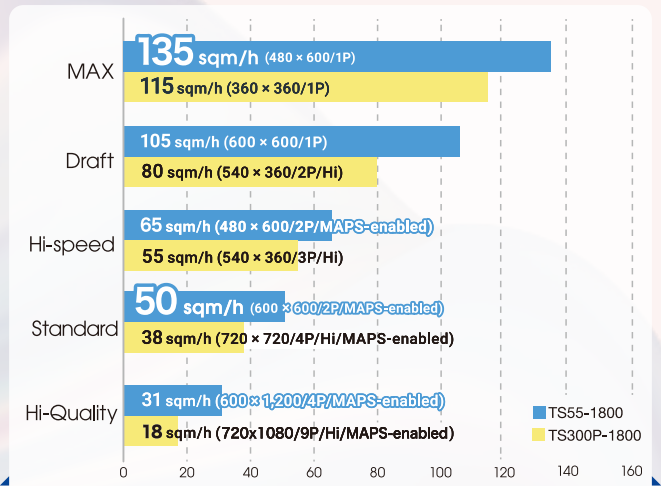
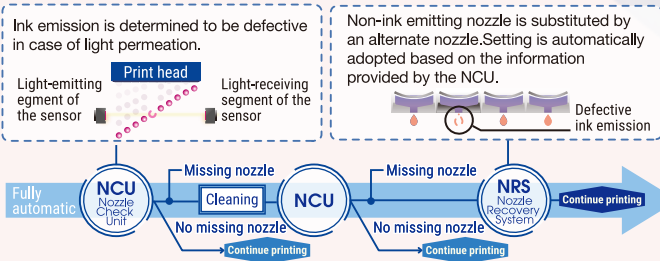
In ordinary textile printers, the straight pass boundaries often results in bandings and discoloration due to slight misalignment. The "MAPS (Mimaki Advanced Pass System)" functionality provides gradation to printed pass boundaries and maintains stable print quality by reducing banding and uneven color.

MAPS functional image



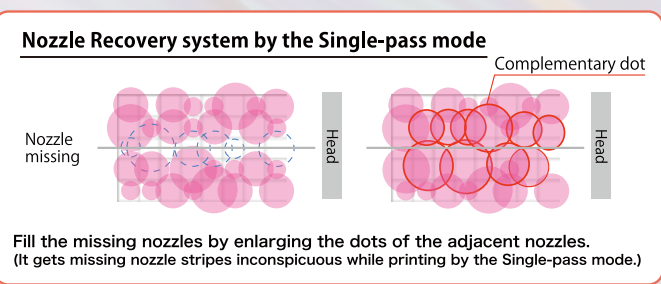
Minimization of NCU/NRS downtime

Incorporates Mimaki's unique automatic nozzle check unit ("NCU"). When the NCU detects a missing nozzle, it automatically performs cleaning to solve the problem. If the missing nozzle remains unresolved after cleaning, printing is commenced upon switching to an alternate nozzle. The print can be restarted to maintain productivity, without the need to wait for a service representative. The NRS is applied to the 1 Pass print mode, too. Even the max. print mode is very practical for the production.



Comparison of printout between same image quality requirements
 Approx. **130%** superior to conventional model* [standard mode]
 TS55-1800 50 sqm/h 4-color 600 x 600 dpi / TS300P-1800 38 sqm/h 4-color 720 x 720 dpi 4P Hi
 *Comparative printout speed

Nozzle Recovery system by the Single-pass mode (Patent-pending)



More user-friendliness !

Feed correction function by print mode

Different feed correction values can be applied to each print mode. Feed correction value for each print mode can be managed by machine setting. It is not necessary to perform feed confirmation for every mode and reduces the work of operator.

Each Print Cond.: ON
Feed correction value mode can be managed by each print.

The respective correction value is set on selecting a different print mode.

- 480x600 1p → 480x600 1Pass
- 480x600 2 → 480x600 2Pass
- 600x600 1p → 600x600 1Pass

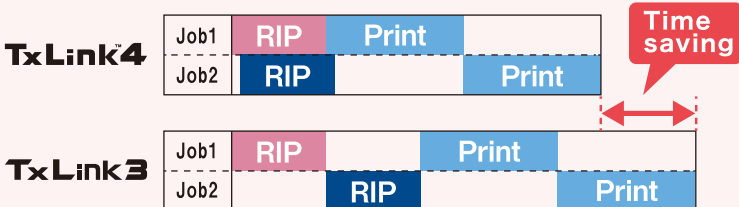
Each Print Cond.: OFF
 While the OFF is indicated, one feed correction value is applied to all of print mode.

Guaranteed beauty

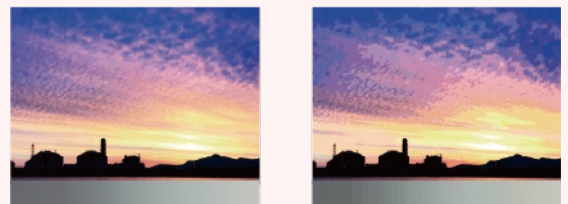
Sophisticated Textile RIP software, "TexLink4 Lite Edition"

Parallel RIP function to improve production efficiency

The parallel RIP function is useful for multiple print job data. RIP processing of multiple jobs can be performed in parallel, resulting in a significant reduction in work time. Up to 8 jobs can be processed in parallel.



16-bit rendering achieves beautiful gradation expression



TxLink4 16-bit rendering

TxLink3 8-bit rendering

8-bit rendering is used depending on the file format or color space.

Software

TxLink4 Lite Edition or RasterLink6Plus is bundled according to user's request.



Specifications

Unit

Item	TS55-1800	
Print head	Head Assy Stagger layout	
Print resolution	480 dpi, 600 dpi, 720 dpi, 1200 dpi	
Maximum print width	1,940 mm (76.4 in)	
Maximum media width	1,950 mm (76.8 in)	
Rolled media weight	45 kg (99.2 lb)	
Ink slot	8	
Ink set	4c/6c/7c/8c	
Ink	Type/Color	Sb610 (Bl/Y/M/K/Lbl/Lm/Lk/Fy/Fp)
	Capacity	2L ink pack / 10kg ink tank
Safety standard	VCCI Class A / FCC Class A / CE Marking (EMC, Low voltage, Machinery directive, RoHS) CB Report / Energy Star / RCM / EAC	
Interface	USB 2.0 Hi-speed, Ethernet 1000BASE-T	
Power	Single phase AC 100-120 V/AC 200-240 V x 1	
Power consumption	(AC 100 V) 1.44 kW (AC 200 V) 1.92 kW or less	
Operational environment	Temperature: 20-30 degC (68-77 degF) Humidity: 35-65% Rh (Non condensing)	
Outside dimensions (W x D x H)	3,240 x 713 x 1,857 mm (127.6 x 28.1 x 73.1 in)	
Weight	202 kg (445.3 lb)	

Option

Mini-jumbo roll unit

Item	Mini-jumbo roll unit
Roll media size	Max. weight: Winding 100 kg (220.5 lb) /Feeding 300 kg (661.4 lb)
	Max. diameter: Winding 280 mm (11 in) /Feeding 600 mm (23.6 in)
	Max. width: 1,910 mm (75.2 in)
	Max. printable width: 1,900 mm (74.8 in)
Power	Single phase AC 200-240 V x 1
Power consumption	(AC 200 V) 1.0 kW or less
Outside dimensions (W x D x H)	2,773 x 998* x 602 mm (109.1 x 39.3 x 23.7 in) (unit only)
Weight	191 kg (421.1 lb)

*When Φ 600 roll is installed.

10kg Ink supply unit

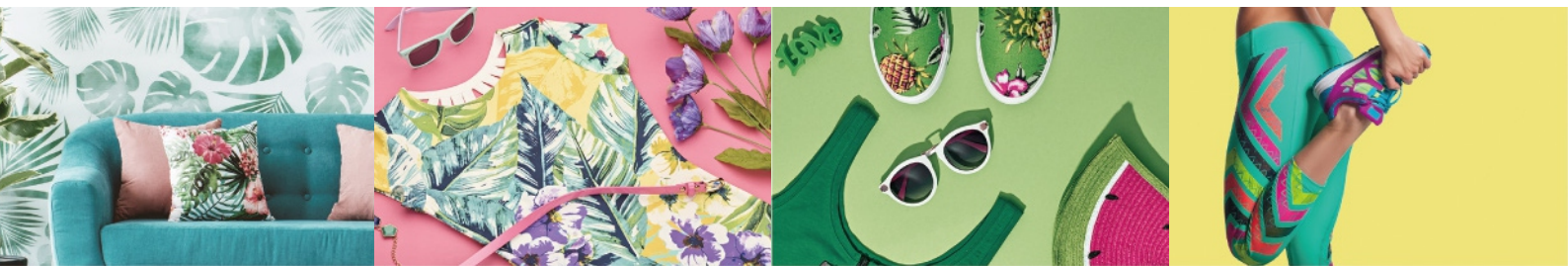
Item	10kg Ink supply unit	
Item code	OPT-J0475	
Ink set	4-colors/6-colors/7-colors/8-colors	
Ink	Type/Color	Sb610 (Bl/M/Y/K/Lbl/Lm/Lk/Fy/Fp)
	Capacity	10 kg ink tank (Per color) Lk, Fy and Fp are supplied by 2L pack
Outside dimensions (W x D x H)	824 x 1,035 x 383 mm (32.4 x 40.7 x 15.0 in)	
Weight	35 kg (77.2 lb)	

Supply

Item	Item code	Description
Sublimation transfer ink Sb610 2L ink pack	Blue	SB610-BLT-2L
	Yellow	SB610-YT-2L
	Magenta	SB610-MT-2L
	Black	SB610-KT-2L
	Light blue	SB610-LBT-2L
	Light magenta	SB610-LMT-2L
	Light black	SB610-LKT-2L
	Fluorescent yellow	SB610-FYT-2L
	Fluorescent pink	SB610-FPT-2L
Sublimation transfer ink Sb610 10kg ink tank	Blue	SB610-BLT-BJ
	Yellow	SB610-YT-BJ
	Magenta	SB610-MT-BJ
	Black	SB610-KT-BJ
	Light blue	SB610-LBT-BJ
	Light magenta	SB610-LMT-BJ
Flushing Liquid 03 Cartridge	FL00 3-Z 22	220ml cartridge
Flushing Liquid 03 2L pack	FL00 3-Z L2	

Extended heater

Item	Extended heater
Item code	OPT-J0481
Power	Single phase AC100-120V/AC200-240V±10% 50/60Hz ±1Hz
Power consumption	(AC 100 V) 1.0 kW or less/ (AC 200 V) 1.0 kW or less
Outside dimensions (W x D x H)	2,336 x 108 x 236 mm (91.9 x 4.2 x 9.2 in)
Weight	15 kg (33.1 lb)



® **LIPI MARKETING PVT. LTD**

No: 28, 3rd Cross St, Venkateswara Colony, Nehru Nagar, OMR Kottivakkam, Chennai - 600041

☎ +9194443 95477 / +91 94443 95467

✉ sales@lipimarketing.com 🌐 www.lipimarketing.com