



LIPI MARKETING PVT. LTD.

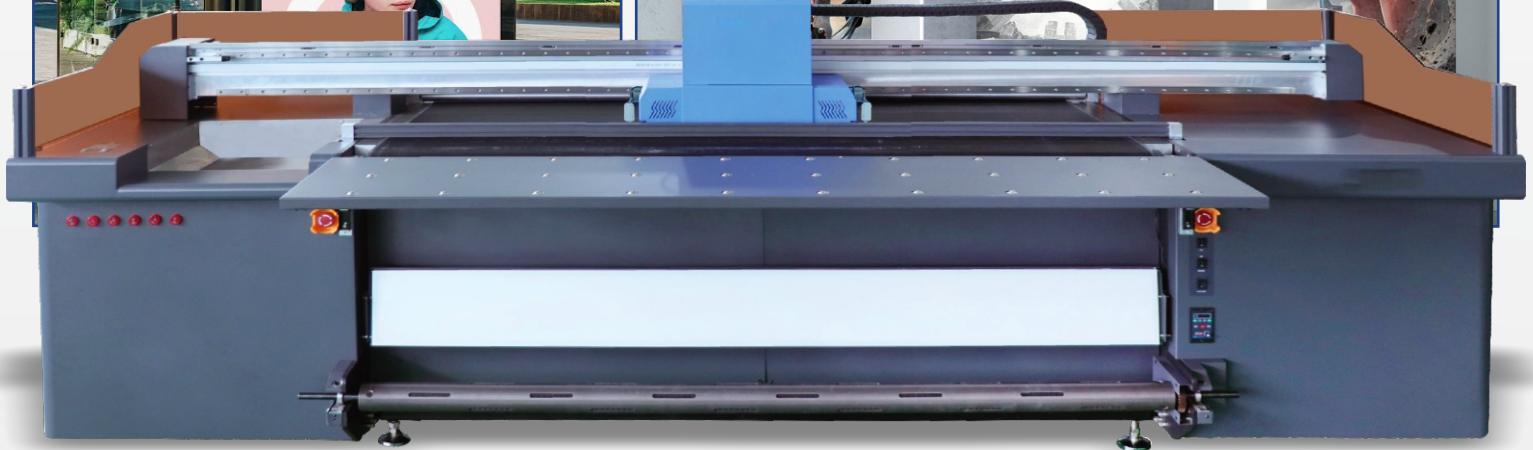
Follow Us at



KENJET

2.5m Hybrid UV Machine

KG - UH2500 【Ricoh Gen5/Gen6】



| | | | | | | | |
|---|---|---|---|----|----|----|---|
| C | M | Y | K | | | | |
| C | M | Y | K | LC | LM | | |
| W | C | M | Y | K | V | | |
| W | C | M | Y | K | LC | LM | V |
| C | M | Y | K | W | | | |
| C | M | Y | K | LC | LM | W | |

2400 dpi
Max Resolution

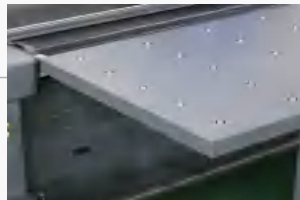
Variable Drop

Simple Operation

Continuous printing

Technical Characteristics

- ▶ Cold light LED curing with tiny temperature variation ensures high printing quality.
- ▶ High stability magnetic Encoderstrip.
- ▶ Adjustable head height, laser positioning system and movable printing platform Result in high-efficiency printing jobs.
- ▶ Air-shaft take up system makes more stable paper collecting
- ▶ Stable printing technology and ink supply system reduces maintenance cost.
- ▶ International ICC standard with profile curve adjustment function.



Integrated belt & flatbed media feeding system is competent to print both roll and rigid media. Folding extension Frame saves space and cost as well. Independent widened platform to accommodate more materials. Air-shaft take up system makes more stable paper collecting



Dual mute THK guide rails ensure stability of printing and high quality printing output. The sheet media is Automatically positioned, and the assistance of the front pressure bar makes the material more smooth, Ensuring the accuracy of printing. Automatic height measurement system Adjust the distance between the Baseplate and the media automatically to guarantee the best quality



Front LED lamp enhances the accuracy of colour and makes the printing output more real. Multi functional Vacuum platform is divided into six areas to control accordingly with adjustable vacuum power. The Material is always in good status during the printing process to avoid wrinkling. Bulky ink with ink alarm System represents the advanced concept of industrial application to ensure long-term stable printing.

Printing Mode & Dimension

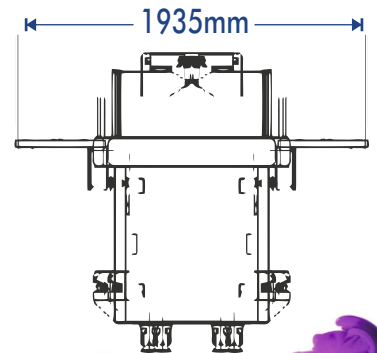
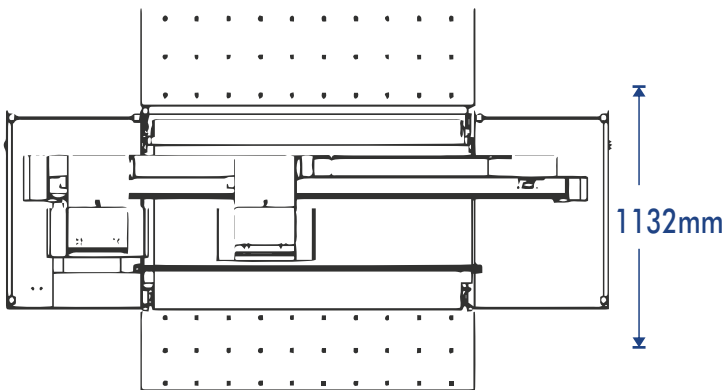
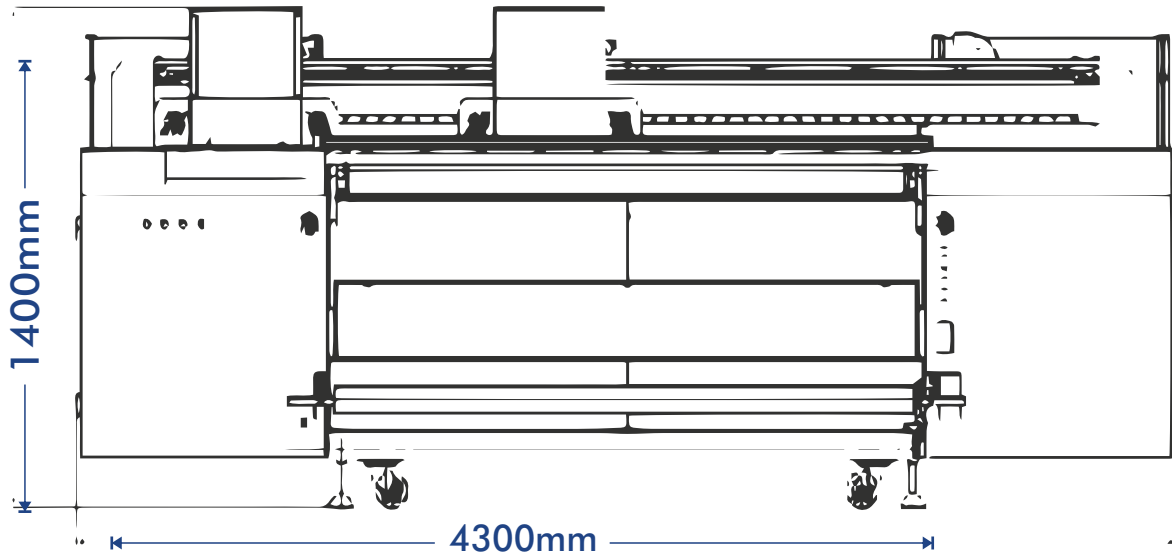
5pcs Ricoh Gen5 Heads(2+1+2)

CMYK

CMYK+W

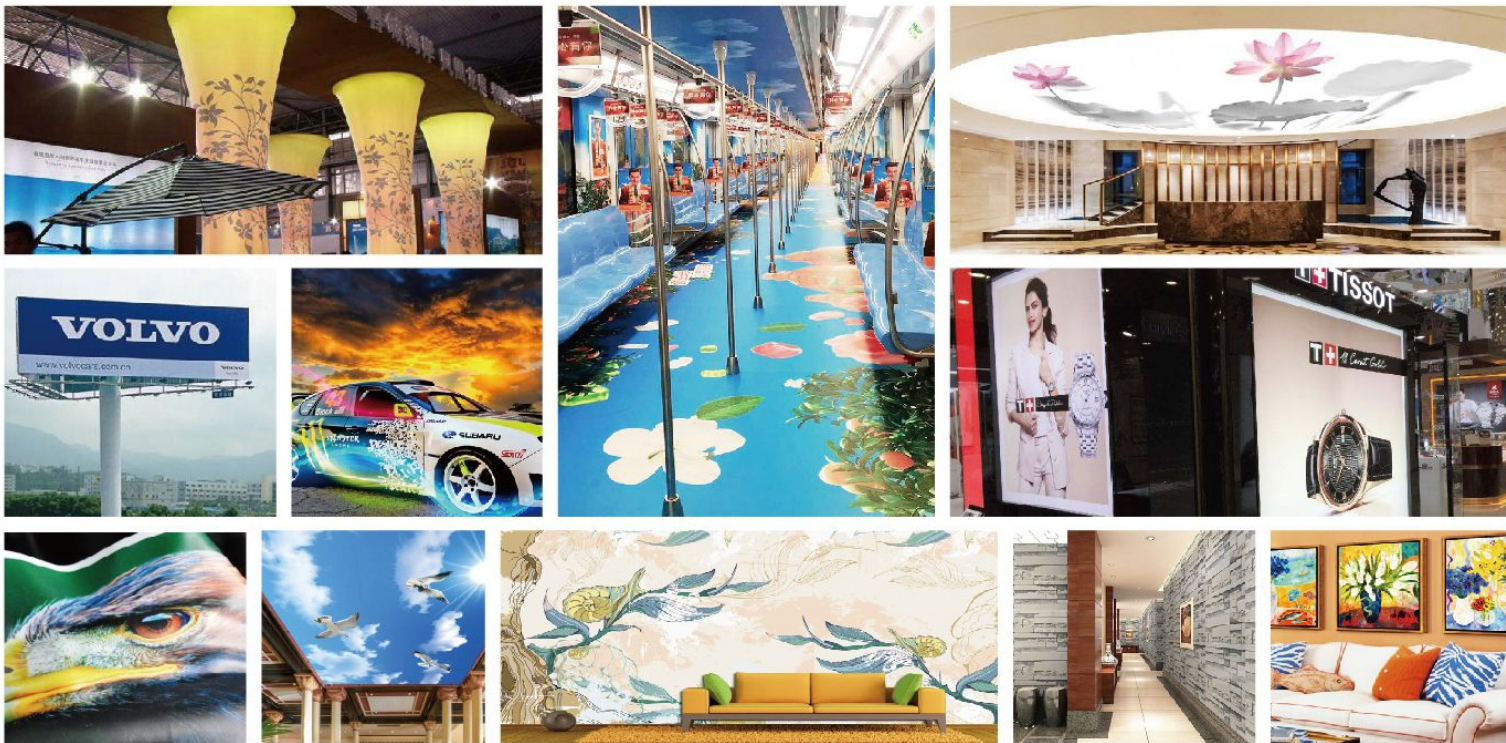
CMYK+W+CMYK

| | CMYK | CMYK+W | CMYK+W+CMYK |
|--------------------------|----------|----------|-------------|
| 4PASS PRODUCTION MODE: | 45 sqm/h | 36 sqm/h | 25 sqm/h |
| 6PASS QUALITY MODE: | 36 sqm/h | 24 sqm/h | 17 sqm/h |
| 8PASS HIGH QUALITY MODE: | 21 sqm/h | 18 sqm/h | 13 sqm/h |



Technical Parameter

| | |
|-----------------------|---|
| Model | KG - UH 2500 |
| Print Head Type | Ricoh Gen5 / Gen6 |
| Printing Size (W x D) | 2500 x 1900mm |
| Printing Technology | Gray Scale piezoelectric Inkjet Technology |
| Maximum Resolution | 2400 dpi |
| Ink Type | LED UV Ink Continual Ink Supply System (2.5l Ink Tank) C/ M/ Y/ K/ Lc/ Lm/ W/ Varnish |
| Media Thickness | 50mm |
| Colour Control | ICC Standard, Adjustment of ICC and density |
| RIP Software | Photoprint |
| Environment | Temperature 180C - 260C; Humidity: 30% - 75% (RH) |
| Power Consumption | Printing mode: 5000W ; Sleep mode: 600W |
| Printer Dimension | Main Equipment Packing Size: 4500 x 1100 x 1540mm Extension Board Packing Size: 2690 x 500 x 100mm |
| Packing Weight | 2T |



LIPI MARKETING PVT. LTD

No: 28, 3rd Cross St, Venkateswara Colony, Nehru Nagar, Kottivakkam, Chennai - 600041

+91 94443 95477 / +91 94443 95467 ✉ sales@lipimarketing.com 🌐 www.lipimarketing.com